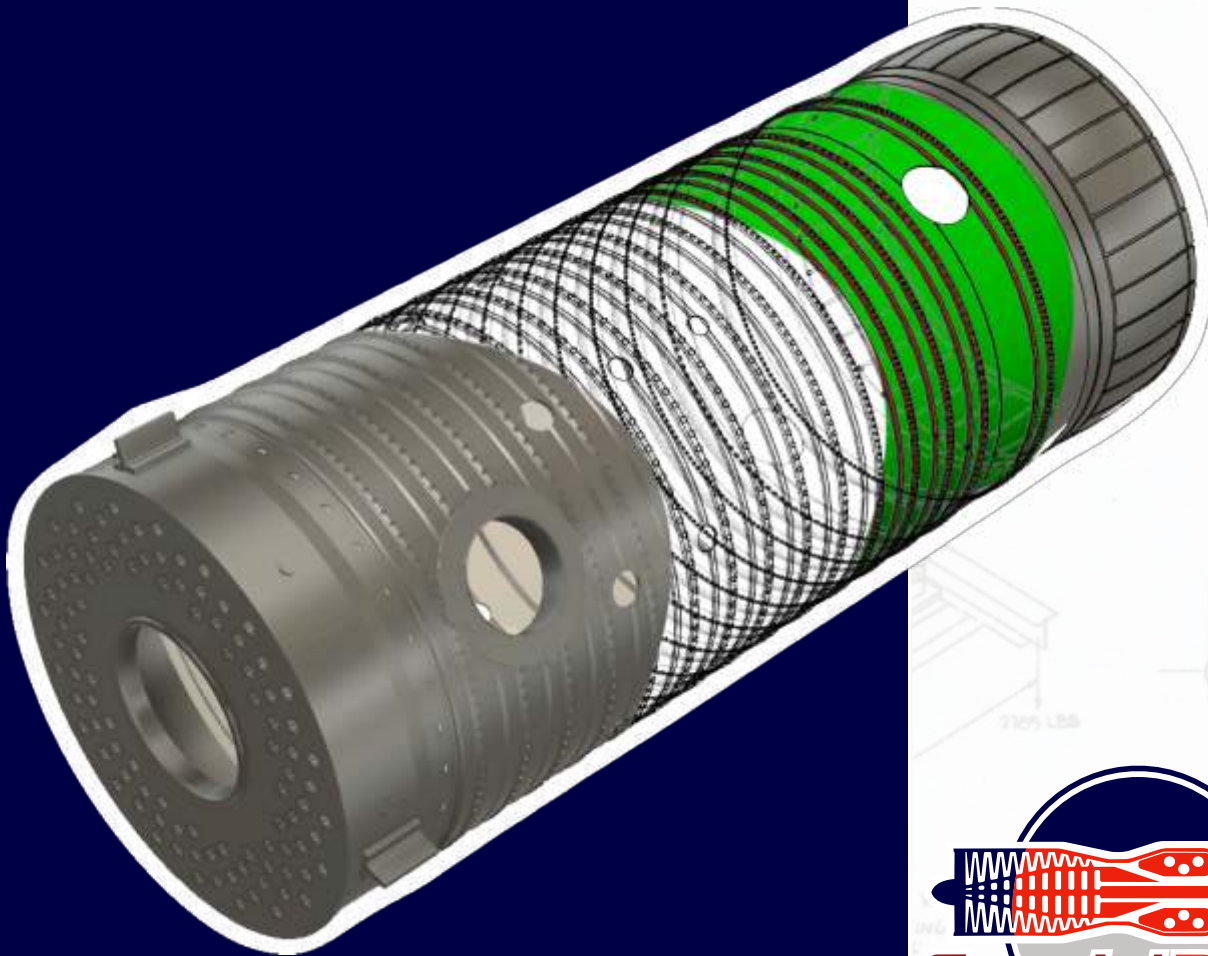


NEW PARTS DEVELOPMENT

Special Parts



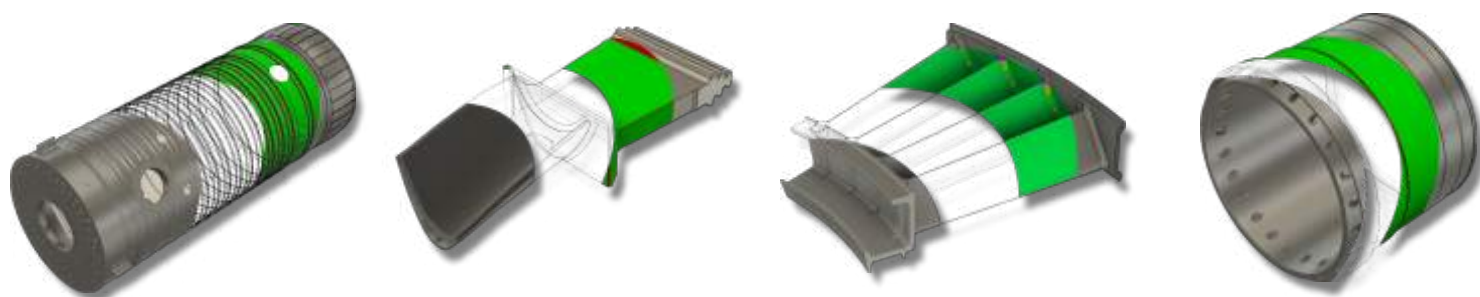
Special Parts

1" LIFTING BEAM



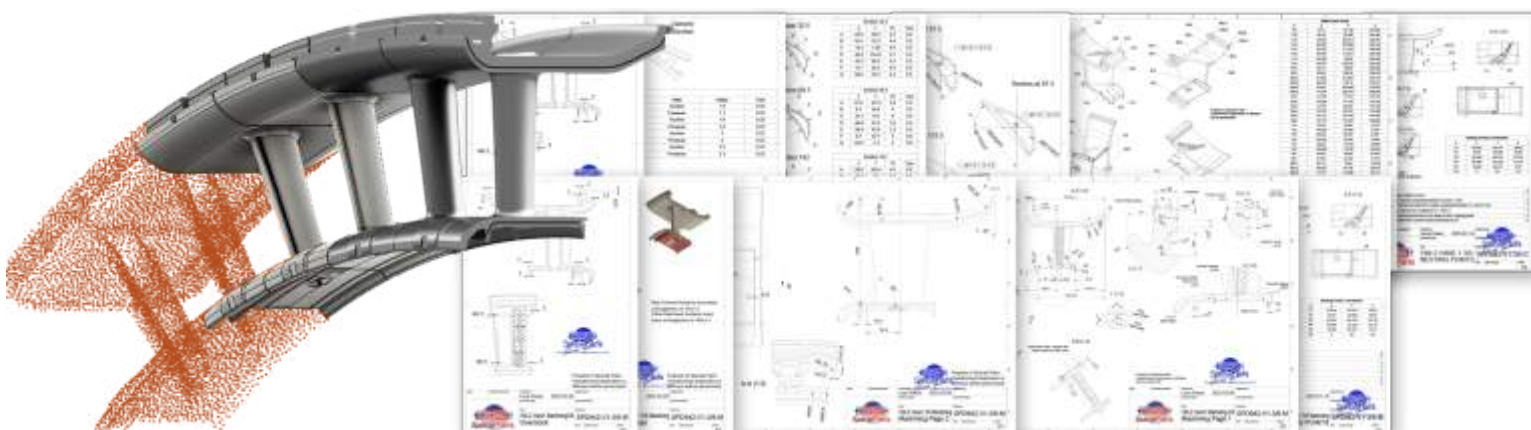
MANUFACTURING MADE EASY

SP's reverse engineering and development activities are aimed to support its customers with fast track cycle, high quality, aftermarket parts. SP's expertise span from combustion chambers, turbine and compressor rotary and stator blades, to small consumable parts. Whether your project is large or small, SP's technical experts together with SP's manufacturing partners and state of the art equipment, will provide the best tailored solution.



Reverse Engineering

One or more samples are used to determine the Material and Shape of the component. For each stage of the production, complete manufacturing documentation, drawings and Quality Acceptance Protocols are drafted.

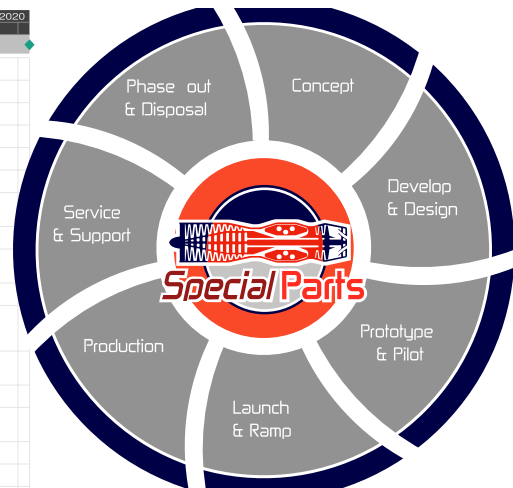
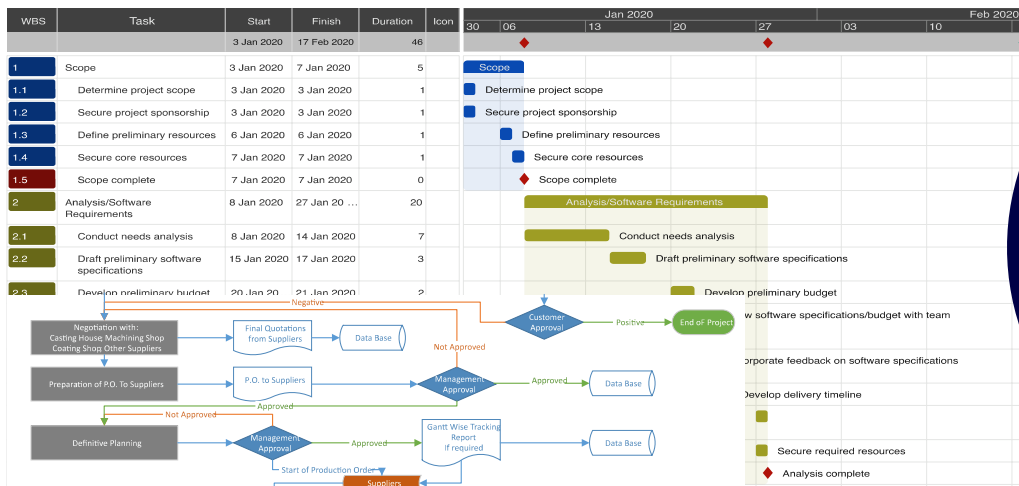




Process Design & Development

The design of all the required tooling is drafted.

The planning and the validation of all the production activities is agreed with all the suppliers involved.



Process Validation

The definitive plan, drawings, Manufacturing and Quality Specification are presented to the Customer for its evaluation and approval.



Manufacturing

Under SP Supervision, each company within the supply chain produces several trial parts in order to perfect the manufacturing processes and to guarantee continued repeatability of the quality requirements during the production.

All relevant parameters and data are registered in the FAIR (First Article Inspection Report)





SPECIAL PARTS LTD

125 John Wilson Business Park

Chestfield, Whitstable, Kent CT5 3QT

Tel.: +44 (0) 20 7602 3111

Info@specialparts.co.uk

www.specialparts.co.uk

