

NEW PARTS DEVELOPMENT

Special Parts



LIFTING BEAM



Special Parts New Parts Development

SP's reverse engineering and development activities are aimed to support its customers with fast track cycle, high quality, aftermarket parts. SP's expertise span from combustion chambers, turbine and compressor rotary and stator blades, to small consumable parts. Whether your project is large or small, SP's technical experts together with SP's manufacturing partners and state of the art equipment, will provide the best tailored solution.



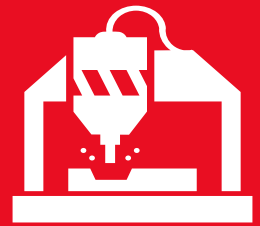
**Reverse
Engineering**



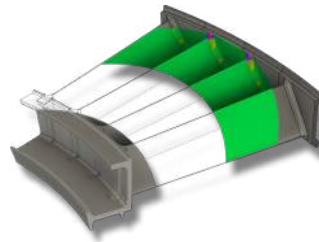
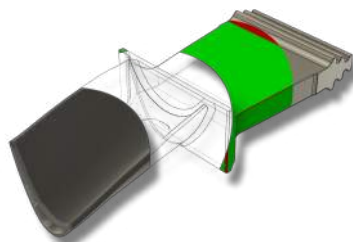
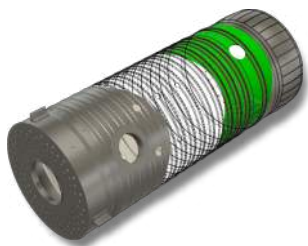
Development



Validation



Manufacturing

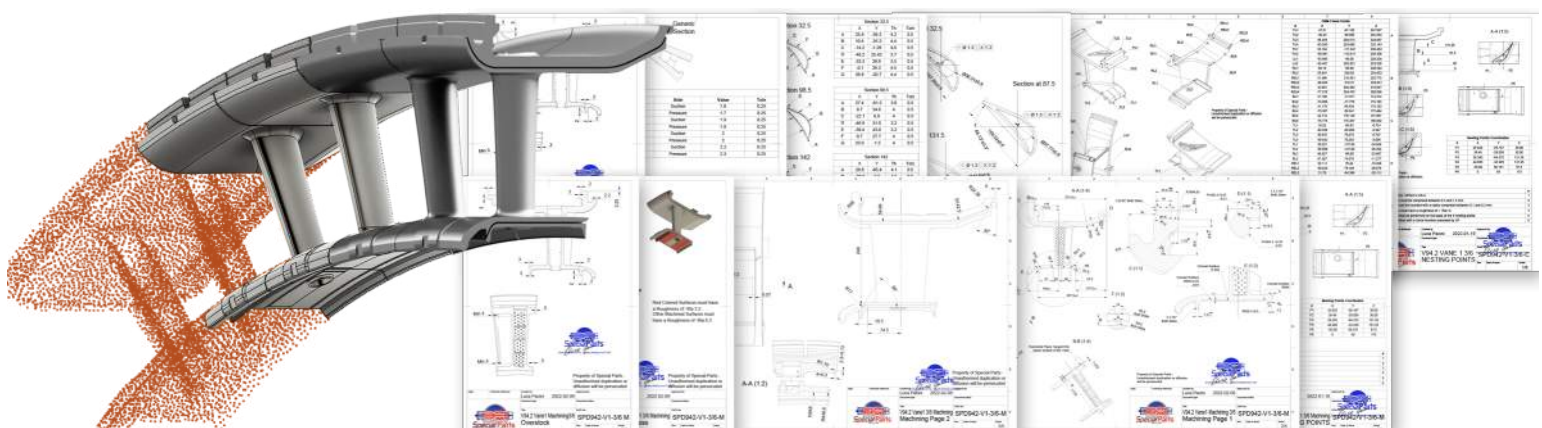


Reverse Engineering

3D SCANNING - DRAWINGS AND MATERIAL SPECIFICATION DRAFTING

One or more samples are used to determine the Material and Shape of the component.

For each stage of the production, complete manufacturing documentation, drawings and Quality Acceptance Protocols are drafted.

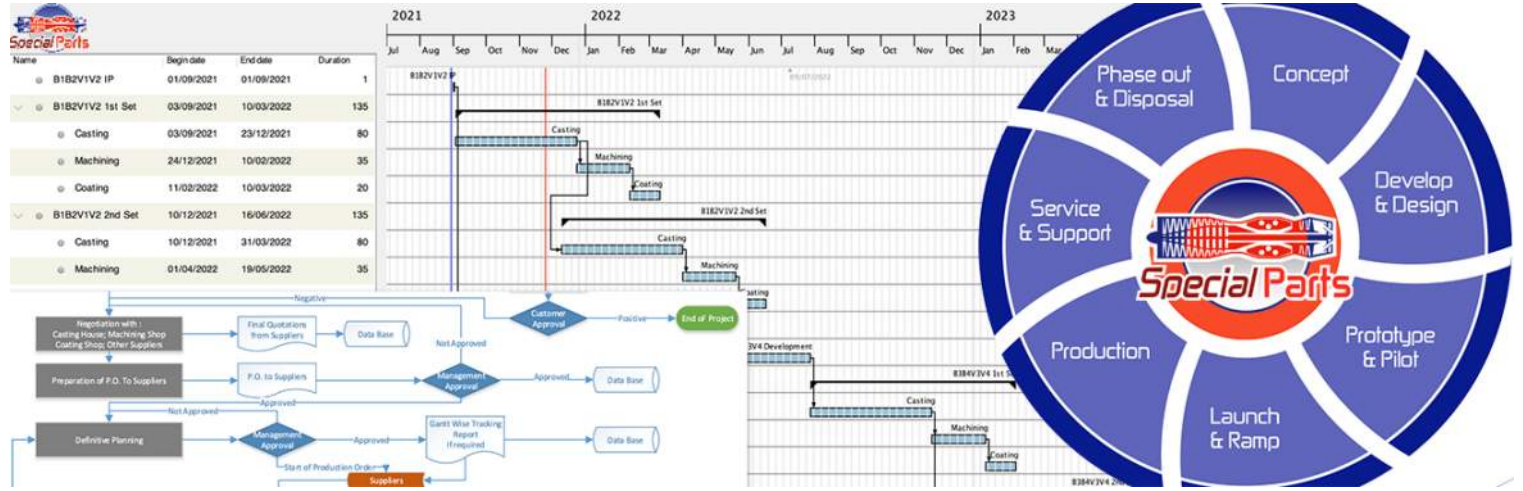




Development

PLANNING OF MANUFACTURING PROCESS AND SELECTION OF THE SUPPLY CHAIN
The design of all the required tooling is drafted.

The planning and the validation of all the production activities is agreed with all the suppliers involved.



Validation

PRESENTATION OF THE DEFINITIVE PLAN AND CUSTOMER'S APPROVAL

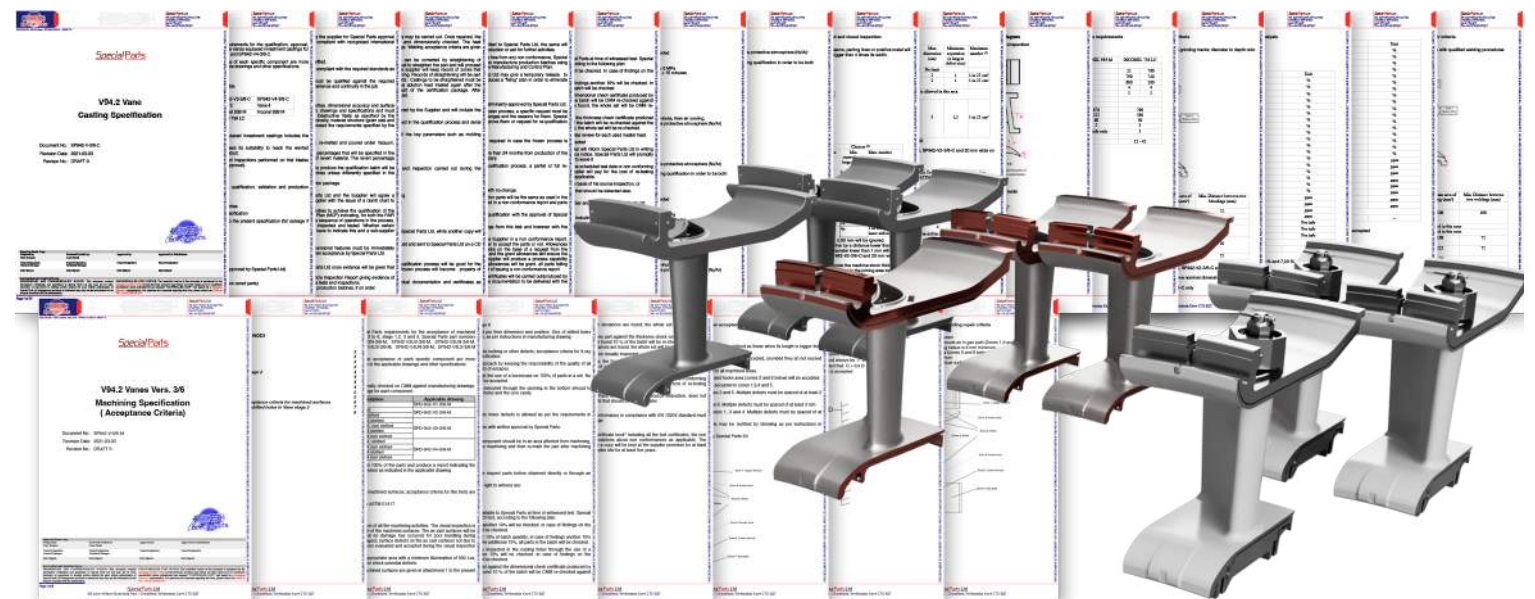
The definitive plan, drawings, Manufacturing and Quality Specification are presented to the Customer for its evaluation and approval

Manufacturing

TOOLING MANUFACTURING - TRIALS AND FAIR

Under SP Supervision, each company within the supply chain produces several trial parts in order to perfect the manufacturing processes and to guarantee continued repeatability of the quality requirements during the production.

All relevant parameters and data are registered in the FAIR (First Article Inspection Report)





SPECIAL PARTS LTD

125 John Wilson Business Park
Chesfield, Whitstable, Kent CT5 3QT

Tel.: +44 (0) 1405 817327
Info@specialparts.co.uk
www.specialparts.co.uk

